

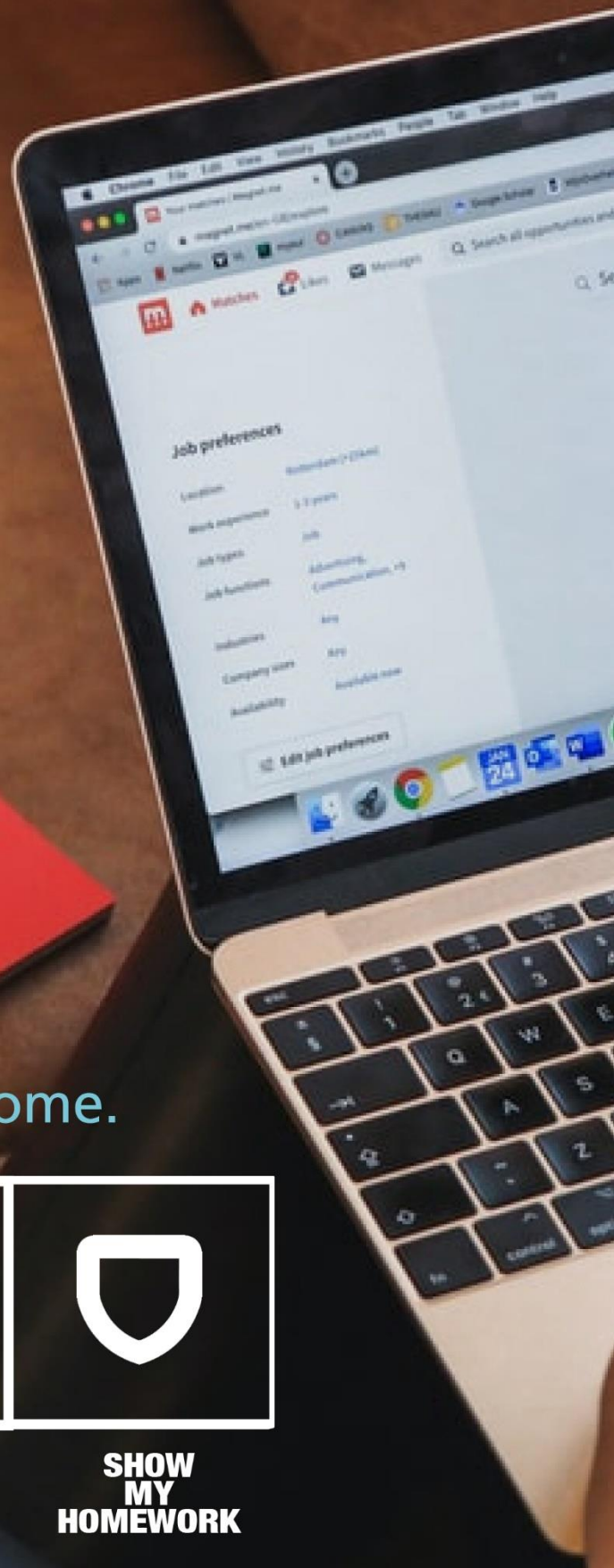


Morton Academy

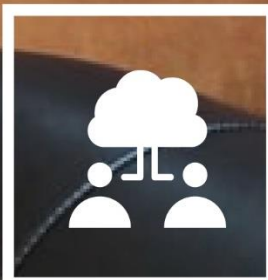
The best in everyone™

Part of United Learning

Flip to Home Learning



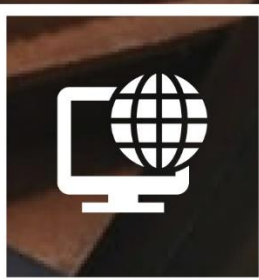
A guide to working from home.



**MICROSOFT
TEAMS**



**ACADEMY
DAY**



**PUPIL
FACING
CURRICULUM**



**SHOW
MY
HOMEWORK**



Morton Academy

The best in everyone™
Part of United Learning

Contents

A MESSAGE FROM THE HEAD TEACHER	2
HOW TO KEEP IN CONTACT WITH US	3
CONTACT DETAILS	3
THE ACADEMY DAY	4
PUPIL ABSENCE SCENARIOS.....	5
PUPIL ABSENCE SCENARIOS.....	6
KEEPING IN TOUCH	7
MICROSOFT TEAMS.....	9
MICROSOFT TEAMS.....	10
MICROSOFT TEAM MEETINGS	11
PUPIL FACING CURRICULUM	12
PUPIL FACING CURRICULUM	13
OTHER THINGS TO CHECK AND USE.	16
PUPIL FACING CURRICULUM TIMETABLE.....	17
UNITS OF STUDY HALF TERM 1	19
UNITS OF STUDY HALF TERM 1	20
SHOW MY HOMEWORK.....	21



A message from the Headteacher

Dear Parent/Carer and Pupil,

This guide sets out all the information pupils will need to continue their learning if for any reason they cannot attend school.

The log-in and password are the pupil's school email address and associated password. We have included these details on the letter that accompanies this guide.

Please follow the sequence of steps in this guide to access all of the areas needed to continue learning at home.

It is important that students will:

1. Know which lessons they must attend on the United Learning Pupil Facing Website
2. Can access LIVE lessons taught by their teachers
3. Can access Voice Over Powerpoints created by their teachers
4. Can access remote assemblies
5. Can attend mentoring and intervention sessions
6. Can view and submit homework

The following pages outline the expectations for the different scenarios that cause pupil absence so that you are clear as to what is required of pupils and the Academy on a daily basis.

If you have any difficulties regarding the accessing any of the information in this booklet then please do not hesitate to email the academy:

Email: info@rrma.org.uk

Mr Richard McGuire – Headteacher



Year Group	Email Address
YEAR 7	Tom.Devlin@rrma.org.uk
YEAR 8	Claire.Nugent@rrma.org.uk
YEAR 9	Will.Tyler@rrma.org.uk
YEAR 10	Emily.Grierson@rrma.org.uk
YEAR 11	Mike.ORoarty@rrma.org.uk
IT SUPPORT	It.helpdesk@rrfa.org.uk

Contact Details

Morton Academy
Wigton road
Carlisle
CA26LB



01228 822644



info@rrma.org.uk



www.rrma.org.uk



The Academy Day

	Year 11	Year 10		Year 9	Year 8	Year 7
Reg	08.35 – 08.55	08.35 – 08.55	Reg	08.35 – 08.55	08.35 – 08.55	08.35 – 08.55
1	08.55 – 09.45	08.55 – 09.45	1	08.55 – 09.45	08.55 – 09.45	08.55 – 09.45
2	09.45 – 10.35	9.45 – 10.35	2	09.45 – 10.35	09.45 – 10.35	09.45 – 10.35
3	10.35 – 11.25	10.35 – 11.25	B	10.35 – 10.55	10.35 – 10.55	10.35 – 10.55
B	11.25 – 11.45	11.25 – 11.45	3	10.55 – 11.45	10.55 – 11.45	10.55 – 11.45
4	11.45 – 12.35	11.45 – 12.35	4	11.45 – 12.35	11.45 – 12.35	11.45 – 12.35
5	12.35 – 13.25	12.35 – 13.25	L	12.35 – 13.05	12.35 – 13.05	12.35 – 13.05
L	13.25 – 14.00	13.25 – 14.00	5	13.05 – 14.00	13.05 – 14.00	13.05 – 14.00
6	14.00 – 14.50	14.00 – 14.50	6	14.00 – 14.50	14.00 – 14.50	14.00 – 14.50

Please note that students will follow their current timetable unless we encounter a full lockdown (tier 4 scenario, page 10)



Pupil Absence Scenarios

Below sets out the expectations of pupils and the Academy should pupil(s) be expected to work from home – ‘Flip to Home Learning’. More information on the United Learning Pupil Facing Curriculum (PFC) can be found on page 12.

Scenario 1: COVID-19 Individual Isolating Pupils (Tier 1)

Pupils will study on the United Learning ‘Pupil Facing Curriculum’ for the duration of isolation. Pupils are also expected to complete homework set on Show My Homework where applicable.

DAY 1 TO 14

- Students will access Show My Homework to access links to the UL Pupil Facing Curriculum, along with Seneca, Sparx and asynchronous lessons planned and stored from each department.
- Students to complete any other tasks also on Show My Homework set by individual teachers that mirror in school learning and homework that is being set.
- If students have technology issues, then a specialised subject pack will be provided and posted home.
- Where the student is SEN:
 - Students will receive a phone call prior to the start of their day, and again at the end of the day to talk through any issues with a Teaching Assistant.
 - Speech, sensory, physical development and numeracy therapy lessons to form part of their online support either through parental engagement or via Teaching Assistant.

DAY 3+

- Head of Year welfare calls begin twice a week to check work is being completed. Reports from Show My Homework issued to Head of Years and Tutors to aid these calls.



Scenario 2: COVID-19 Year Group Isolation

First 3 days pupils will study using the United Learning Pupil Facing Curriculum along with the use of Seneca, Sparx and asynchronous lessons planned and stored from each department

Day 1-3

- Students will access Show My Homework to access link to UL Pupil Facing Curriculum, along with Seneca, Sparx and asynchronous lessons planned and stored from each department.
- Students to complete any other tasks also on Show My Homework set by individual teachers that mirror in school learning and homework that is being set.

Day 4+

- Students will access live lessons through Office 365 using Microsoft Teams. Students will follow their normal timetable.
- Registers will be taken as normal and attendance tracked and followed up by the Head of Years and Tutors.
- Students will access live lessons through Outlook on their calendar.
- Students will also expect to interact with Show My Homework completing any homework that is set; this will be monitored.
- Homework reports will be fed back to tutors so they can contact home on whether live lessons or homework is being completed.

Day 5+

- Head of Year welfare calls begin twice a week to check work is being completed. Reports from Show My Homework issued to Head of Years and Tutors to aid these calls until students are back in school.

SEN/Vulnerable

- Students will receive a phone call prior to the start of their day, and again at the end of the day to talk through any issues with a Teaching Assistant.
- Speech, sensory, physical development and numeracy therapy lessons to form part of their online support either through parental engagement or via a Teaching Assistant.
- Teaching Assistants having access to teaching materials where possible will run asynchronous live lessons before and after lessons to support.



Scenario 3: Fixed Term Exclusion

Pupils will be given a Pupil Facing Curriculum timetable with their exclusion letter. They should follow the daily schedule and complete all homework tasks on Show My Homework for the subjects they study on the Pupil Facing Curriculum.

DAY 1+

- Students will access Show My Homework to access link to UL Pupil Facing Curriculum, along with Seneca, Sparx and asynchronous lessons planned and stored from each department.
- Students to complete and any other tasks also on Show My Homework set by individual teachers that mirror in school learning and homework that is being set.
- Work will also be posted home as usual in the case of an exclusion.

Scenario 4: Long Term Medical Absence

Pupils will study using the United Learning Pupil Facing Curriculum along with the use of Seneca, Sparx and asynchronous lessons planned and stored from each department

DAY 1 TO 14

- Students will access Show My Homework to access link to UL Pupil Facing Curriculum, along with Seneca, Sparx and asynchronous lessons planned and stored from each department.
- Students to complete and any other tasks also on Show My Homework set by individual teachers that mirror in school learning and homework that is being set.
- If students have technology issues then a specialised subject pack will be provided and posted home.

DAY 3

- Head of Year welfare calls begin twice a week to check work is being completed. Reports from Show My Homework issued to Head of Years and tutors to aid these calls.



Pupil Absence Scenarios

Scenario 5: Further Local Restrictions which mean a rota model introduced (Tier 2)

The Academy will move to a rota model with Year 11 attending full time with other year groups attending on a rotational basis. The Academy will also combine on-site provision with remote education. We will continue to allow full-time attendance on site to vulnerable children and the children of key workers. Face coverings will be mandatory in moving areas with a risk assessment reviewed weekly.

WEEK 1

- Year 11 attend as normal.
- Key stage 3 students will follow their normal timetabled curriculum in school.
- Key stage 4 students will also follow their normal timetabled curriculum having access to live lessons through Office 365 and Teams. Registers will be taken and HOY/Tutors/SLT will follow up any non-attendance. If there are technical issues then students must continue to complete work through Show My Homework, Seneca and pre-recorded or asynchronous lessons.
- Teams lessons to be recorded and link uploaded to Show My Homework for students who did not attend to catch up.
- Head of Year/Tutor welfare calls begin twice a week to check attendance for pupils in the building and if work is being completed online.

WEEK 2

- Year 11 attend as normal.
- Key stage 4 students will follow their normal timetabled curriculum in school.
- Key stage 3 students will also follow their normal timetabled curriculum having access to live lessons through Office 365 and Teams. Registers will be taken and HOY/Tutors/SLT will follow up any non-attendance. If there are technical issues then students must continue to complete work through Show My Homework, Seneca and pre-recorded or asynchronous lessons.
- Head of Year/Tutor welfare calls begin twice a week to check attendance for pupils in the building or work is being completed online.

WEEK 3+

- Year 11 attend as normal.
- Students will continue rotating until further updates on when it is safe to return to Tier 1.
- Attendance will be completed as normal through SIMS and any issues will be dealt with by the pastoral team, HOY, Tutors and SLT.

SEN/Vulnerable/Key worker children

- The Academy will run Morton care for all students that are classed vulnerable or any students that parents are key workers.
- Students will be mainly based on computers and will learn from their usual timetable which focuses in the main on live teaching or asynchronous lessons.
- Pastoral team will communicate with SEN and vulnerable children each morning and at the end of each day.



Scenario 6: Significant Local Restrictions requiring partial school closure (Tier 3)

The Academy will provide on-site provision with remote education to allow full-time attendance on site to vulnerable children and the children of key workers. The Academy may also open to selected year groups which would be identified by the Department for Education. Remote education to be provided for all other pupils. Face coverings will be mandatory in all school areas.

Vulnerable /key worker children

- The Academy will run Morton Care for all students that are classed vulnerable or any students whose parents are critical workers.
- Students will be mainly based on computers and will learn from an alternative timetable which focuses on live teaching or asynchronous lessons.
- The Pastoral team will communicate with vulnerable students each morning.

Other students

- An Assessment of impact on staffing will be evaluated and if the normal timetable cannot be achieved, both Key stage 3 and 4 will be provided with a new collapsed timetable to allow teachers to provide live teaching to all year groups. Where this cannot happen, organised asynchronous lessons will be structured and followed up with tasks on Show My Homework that meet the students' needs of the current curriculum maps in each department.
- Registers will be taken, and attendance tracked and monitored. Any issues will be dealt with by the pastoral team, HOY, Tutors and SLT.
- If there are any technology issues in regard to students not being able to access the work online, the Academy will endeavour to rectify this either by providing laptops or paper resources that reflect the curriculum model for the specific year group.
- Students that are allowed in the Academy (based on year groups identified by the Department for Education) will follow a slightly adjusted timetable depending how many year groups will be restricted to being on site.

SEN Students

- Students will receive a phonecall prior to the start of their day, and again at the end of the day to talk through any issues with a Teaching Assistant.
- Speech, sensory, physical development and numeracy therapy lessons to form part of their online support either through parental engagement or via a Teaching Assistant.
- Teaching Assistants having access to teaching materials where possible will run asynchronous or live lessons before and after lessons to support.



Scenario 7: Further National Restrictions requiring full school closure (Tier 4)

The Academy will provide on-site provision with remote education to allow full-time attendance on site only to vulnerable children and the children of key workers. All other pupils should not attend on site. Remote education to be provided for all other pupils.

Vulnerable /key worker children

- The Academy will run Morton care for all students that are classed vulnerable or any students that parents are key workers.
- Students will be mainly be based on computers and will learn from an alternative timetable which focuses on live teaching or asynchronous lessons.
- The Pastoral team will communicate with vulnerable students each morning.
- These students will be grouped in bubbles and distributed in separate areas of the building to ensure the current government guidelines.

Other students

- Both key stage 3 and 4 will be provided with a new collapsed timetable to allow teachers to provide live teaching to all year groups. Where this cannot happen, organised asynchronous lessons will be structured and followed up with tasks on Show My Homework that meet the students' needs of the current curriculum maps in each department.
- Registers will be taken, and attendance tracked and monitored. Any issues will be dealt with by the pastoral team, HOY, Tutors and SLT.
- If there are any technology issues regarding students not being able to access the work online. The Academy will endeavour to rectify this either by providing laptops or paper resources that reflect the curriculum model for the specific year group.

SEN Students

- Students will receive a phone call prior to the start of their day, and again at the end of the day to talk through any issues with a Teaching Assistant.
- Speech, sensory, physical development and numeracy therapy lessons to form part of their online support either through parental engagement or via the Teaching Assistant.
- Teaching Assistants having access to teaching material where possible will run asynchronistic or live lessons before and after lessons to support.

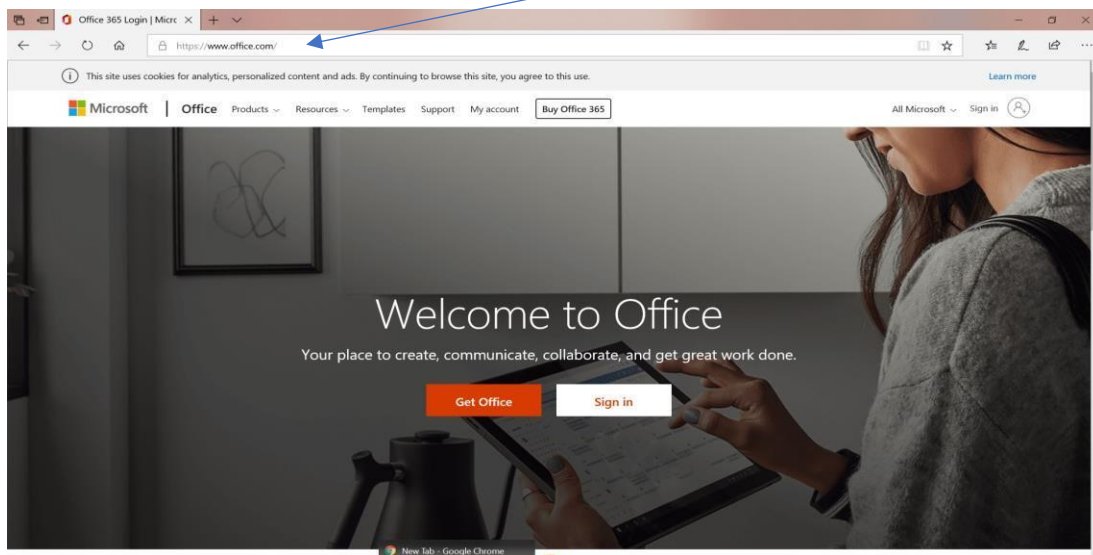
Remote Learning Guides



Keeping in touch

We will use a few different ways to keep in touch with you whilst you work from home.

To log into Office 365, type office.com into the address bar, click sign in.

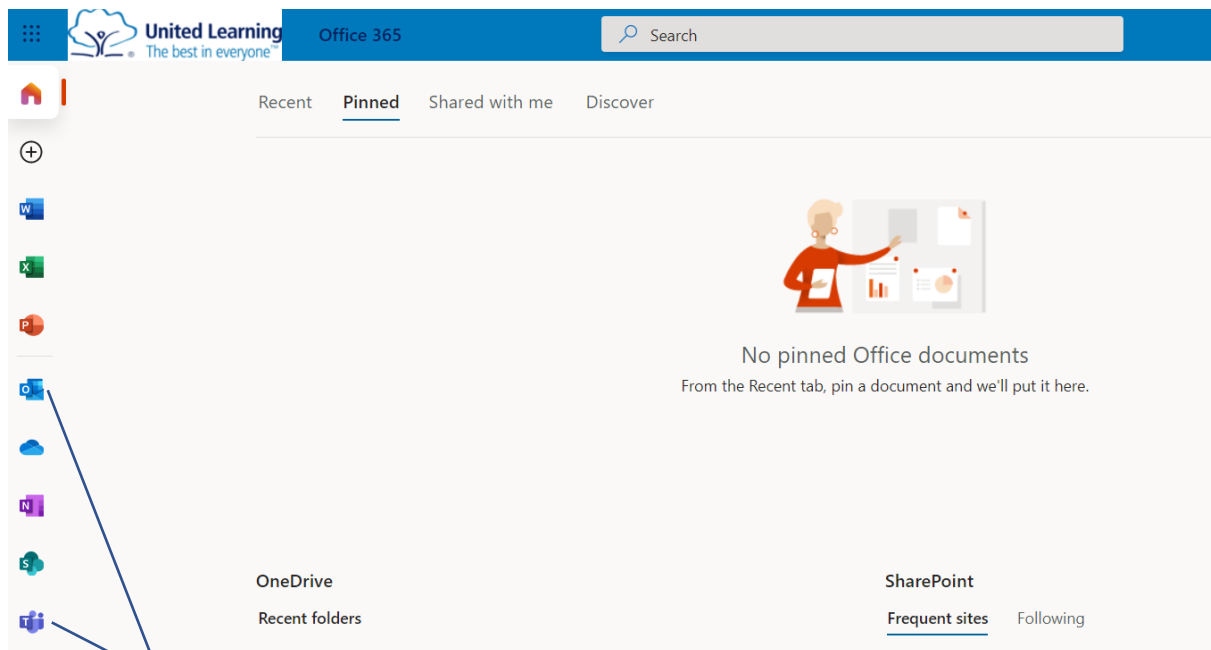


You can now log-in using your school email address and password.

The Morton Academy email addresses follow the same format:

forename surname@student.rrma.org.uk

Once logged in you will see links to all the applications you can access on the left.

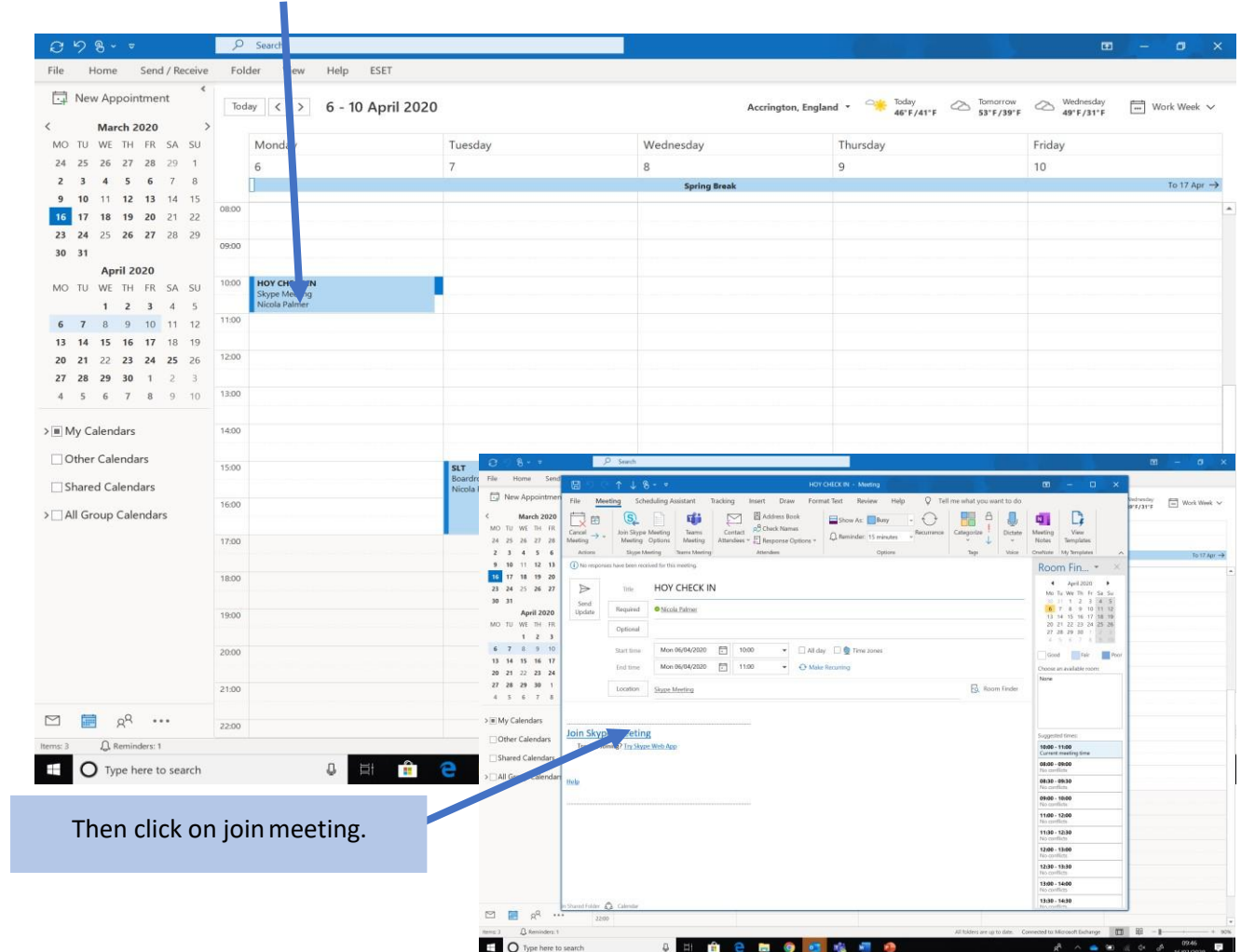


Click on the Teams icon to access work set by teachers and also to access resources and live lessons

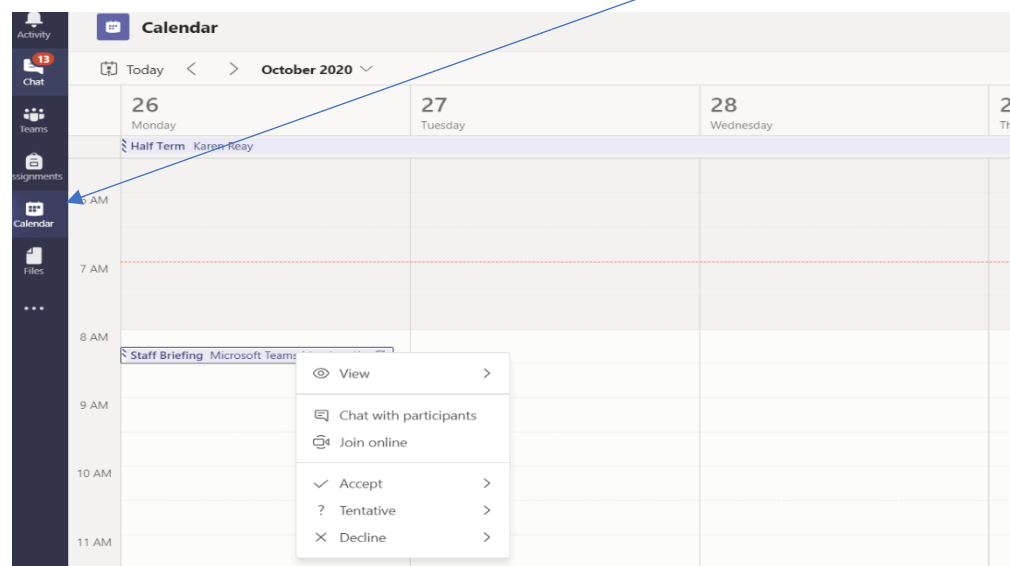
Click on the Outlook icon to access your emails

Microsoft Team Meetings

If a member of staff invites you to a meeting you will get an email notification in outlook. You can accept the meeting from the email, and it will add it to your calendar. Click on it when you are due to be in the meeting



You can also access your calendar in Teams to also join the live lesson meeting





Pupil Facing Curriculum

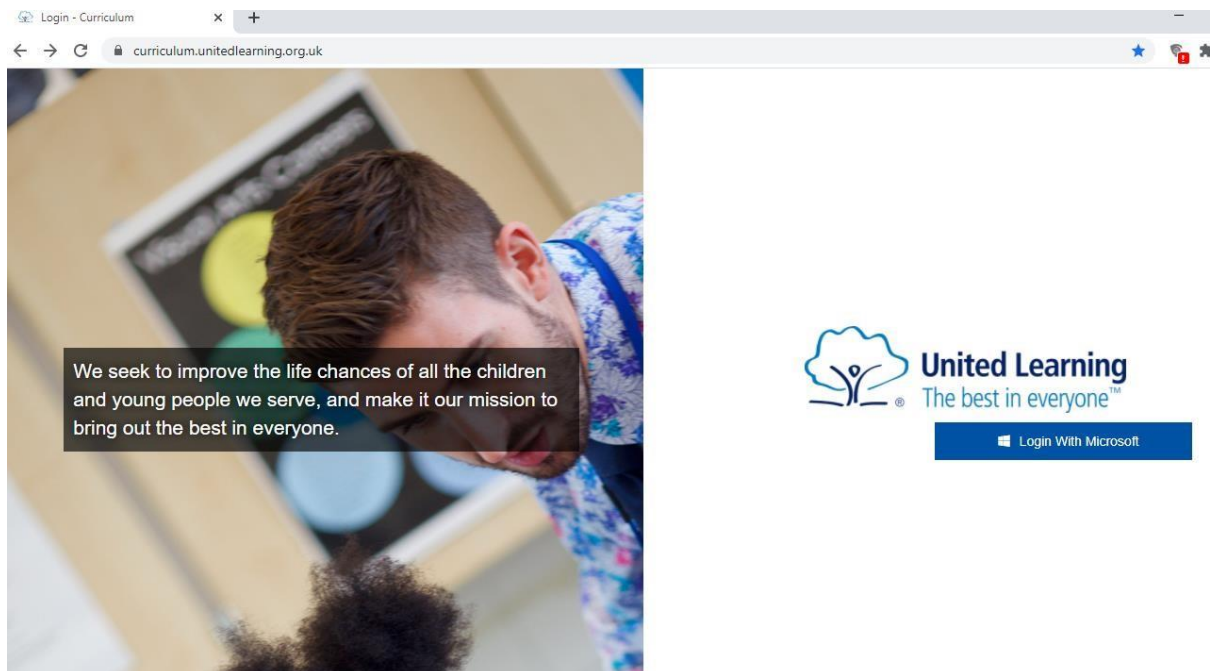
Continuity of Learning

United Learning have created a website to help you access materials from home in case you are unable to come to school for any reason, or if you want to revise topics already covered.

The website contains video lessons for many of your subjects

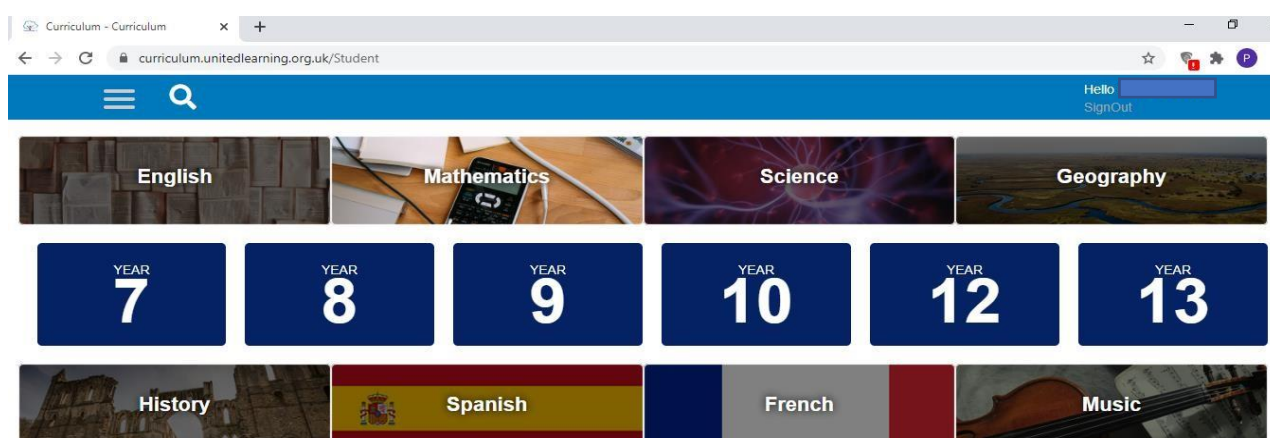
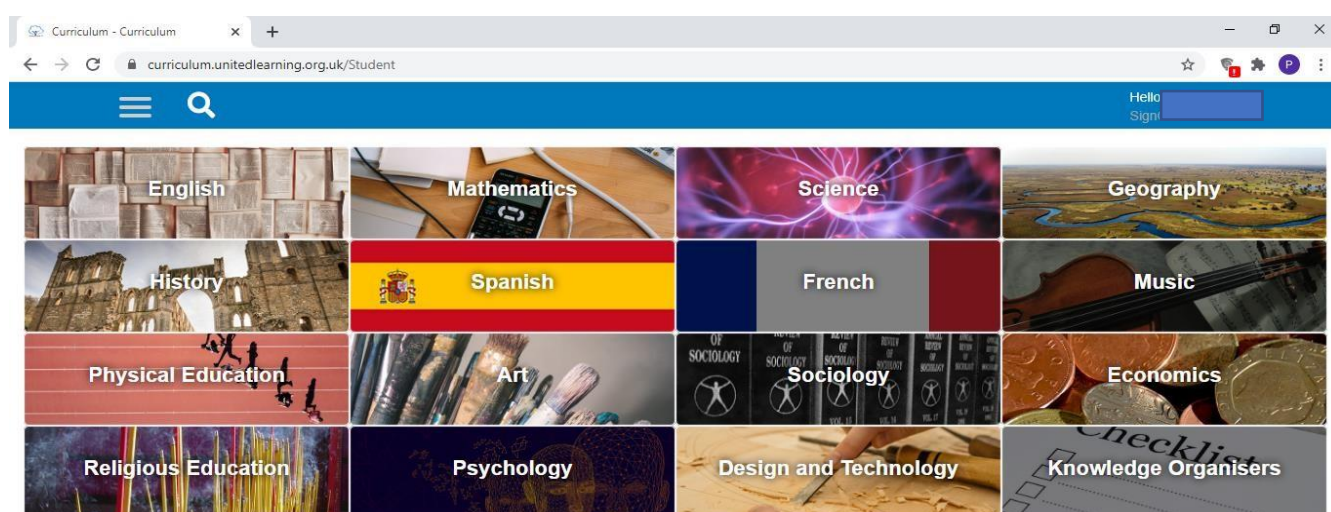
How to access the Pupil Facing Curriculum

Go to: <https://curriculum.unitedlearning.org.uk/>
Login with your school email address.





Once you have logged in you will see the below screen. Click on the subject you would like to access. Please note Geography and Art curriculum can be accessed via a separate website: Oak Academy. You will then see a screen to select your year group.



Choose which unit you want to access, units to be studied per year group can be found on pages 19 and 20 that follow your first term curriculum.



curriculum.unitedlearning.org.uk/Student

YEAR 7 YEAR 8 YEAR 9 YEAR 10 YEAR 12 YEAR 13

Mathematics Year 8

Share	Share	Share
KPI 8.01 - Indices	KPI 8.02 - Prime Factorisation	KPI 8.03 - Rounding to Significant Figures
Share	Share	Share
KPI 8.04 - Fractions	KPI 8.05 - Negative Numbers	KP1 8.15 - Ratio
Share	Share	Share
KPI 8.16 - Area of Circles	KPI 8.17 - Statistical Diagrams	KPI 8.18 - Averages and Range
Share	Share	Share
KPI 8.19 - Two-way tables & Venn diagrams	KPI 8.20 & 8.21 - 3D Shapes & Volume diagrams	Review

The list of all available lessons is displayed.

Mathematics Year 8

KPI 8.01- Indices

8 Resource items. Last Updated on: 12/08/2020

Index Form	▼
Square and Cube Numbers	▼
Further Powers	▼
Square and Cube Roots	▼

Share	Share	Share
KPI 8.04 - Fractions	KPI 8.05 - Negative Numbers	KP1 8.15 - Ratio



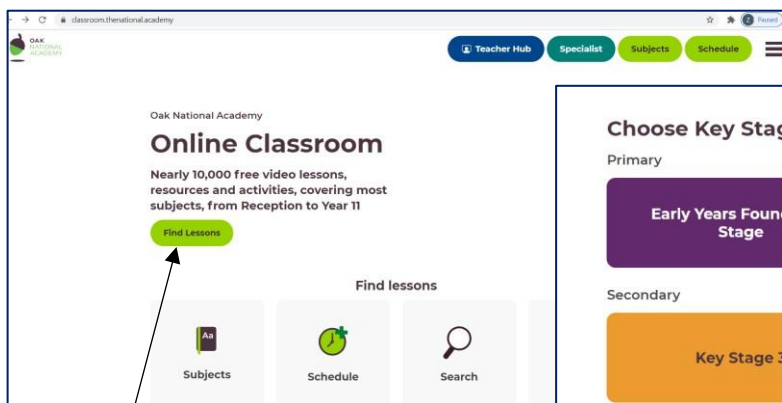


OAK
NATIONAL
ACADEMY

Some of your subjects will ask you to access resources run by the Oak National Academy.

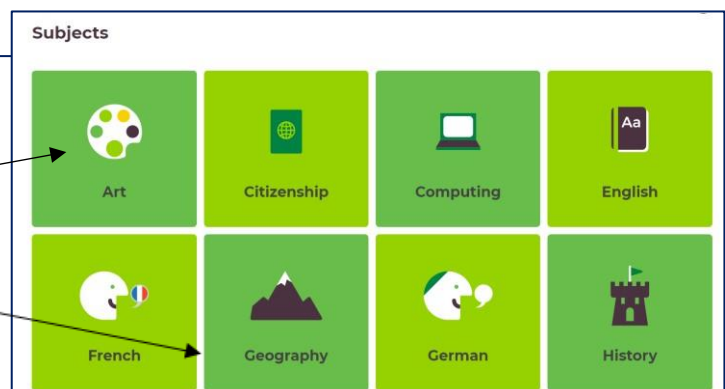
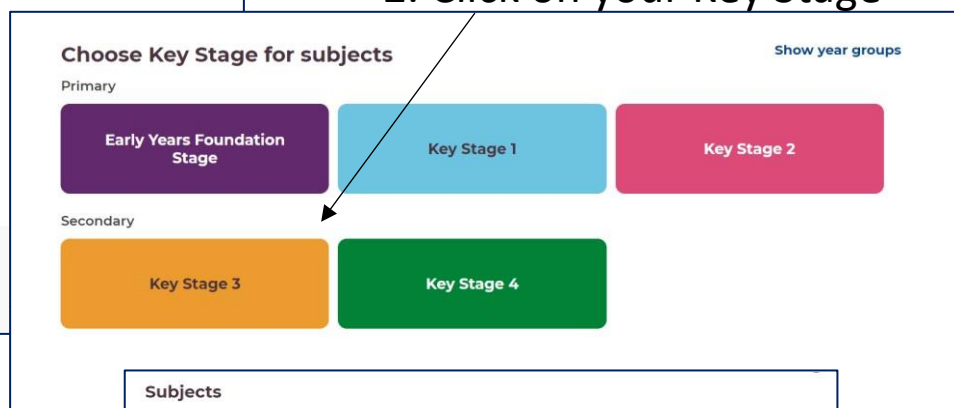
The following instructions will help you find what you need

Visit: <https://classroom.thenational.academy/>



1. Click on Find Lesson

2. Click on your Key Stage

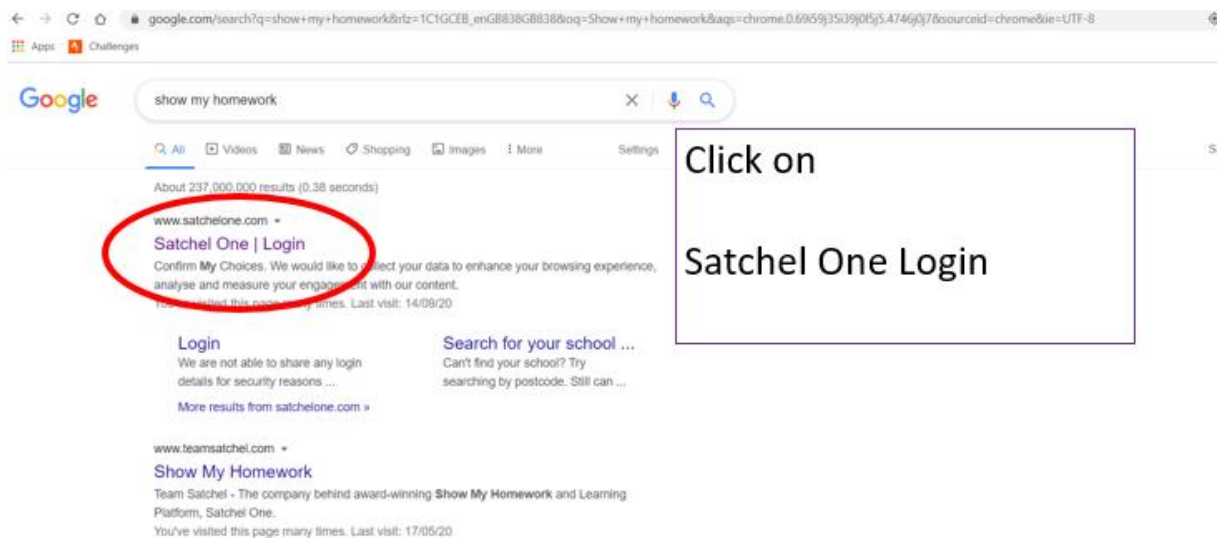
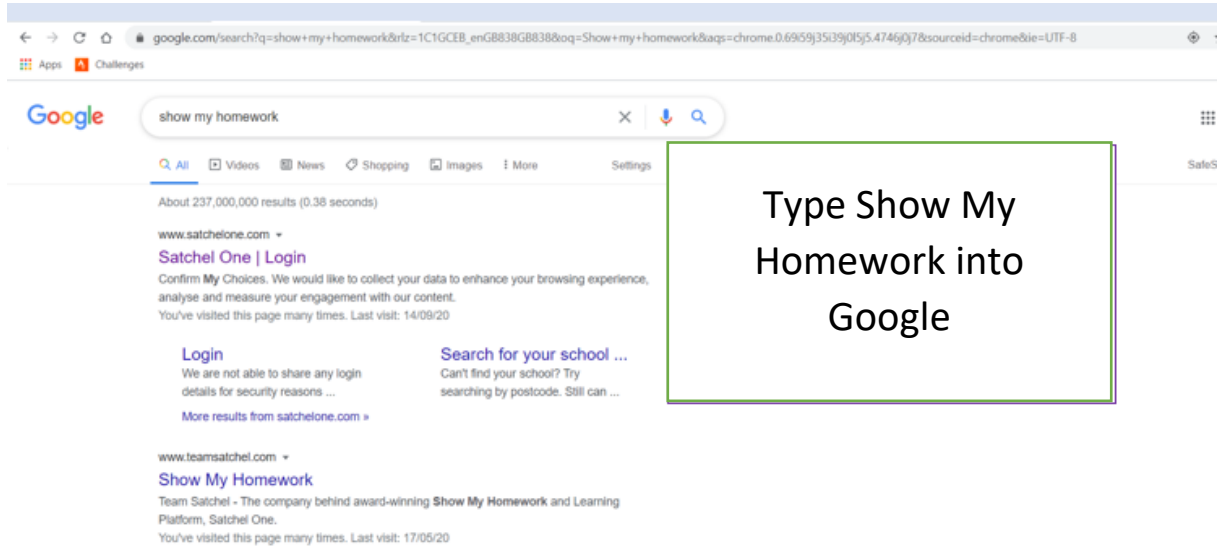


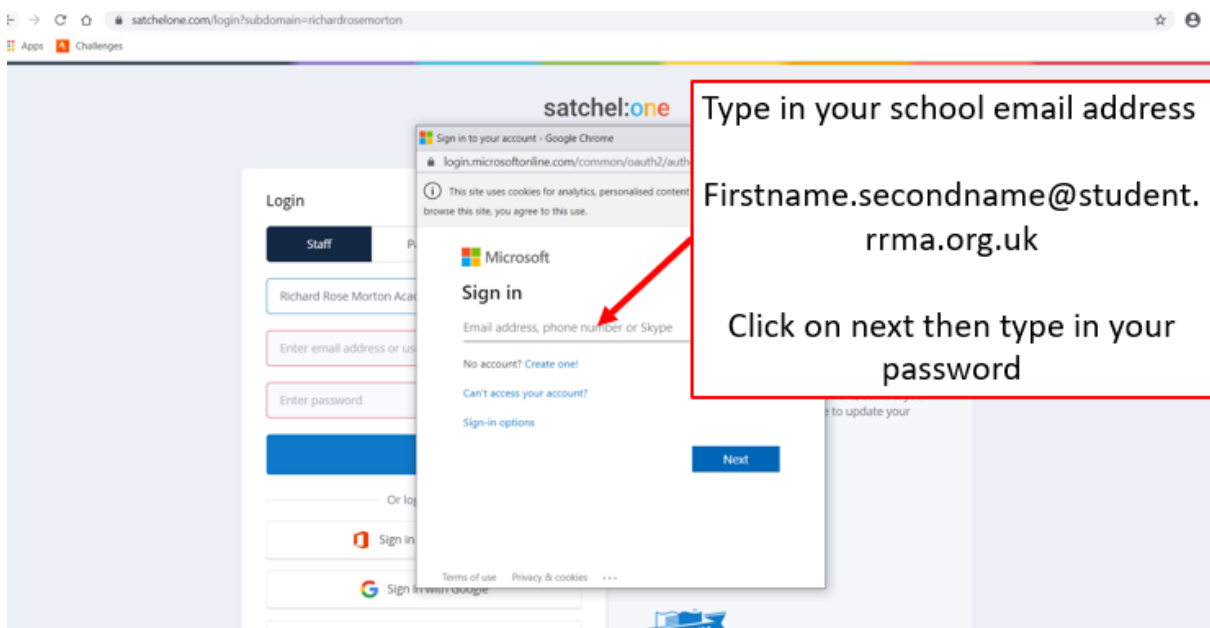
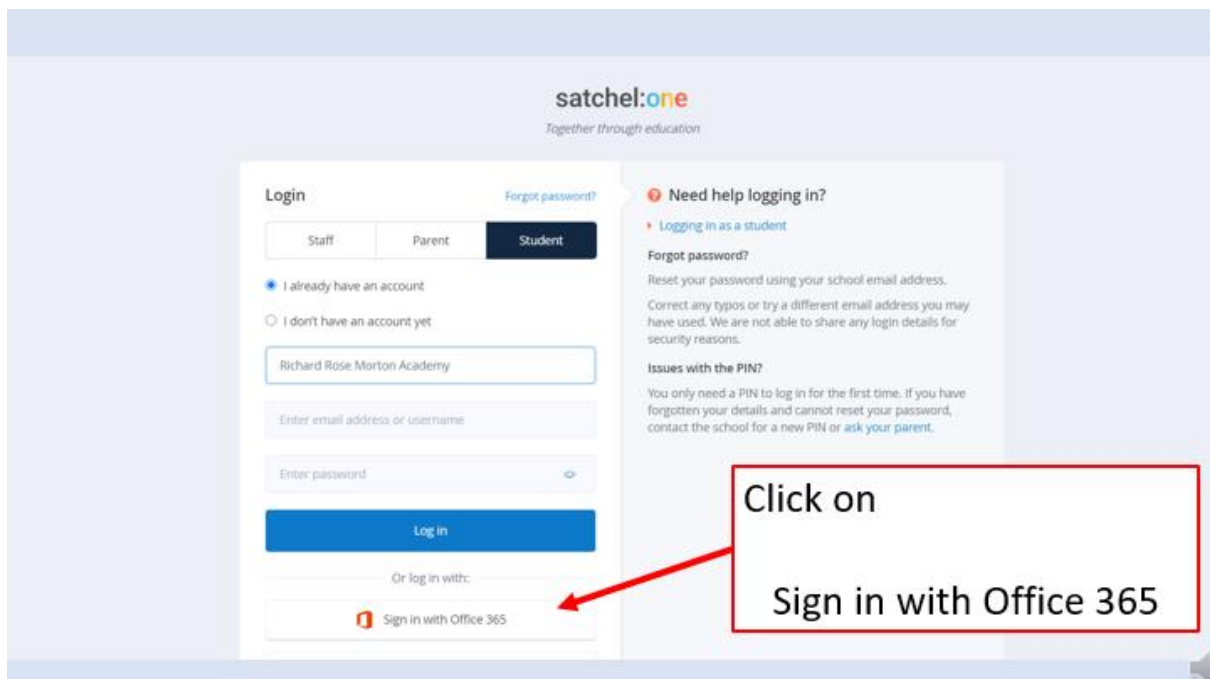
3. Click on Art or Geography only, then select your lesson.



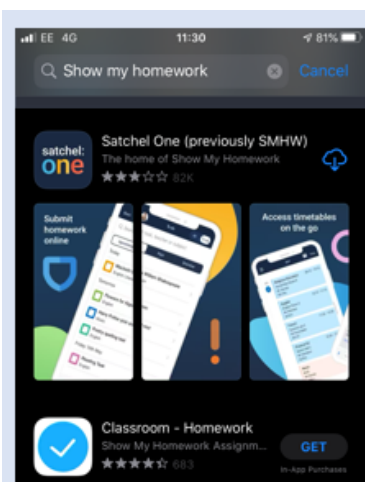
SHOW MY HOMEWORK

How to log on to Show My Homework:

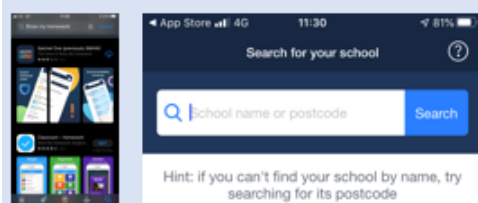




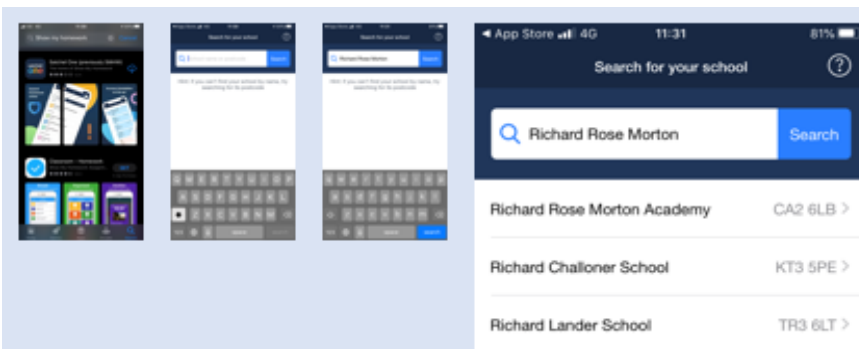
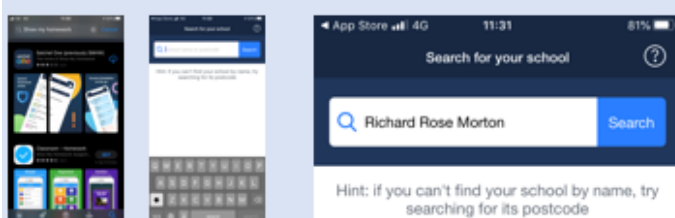
How to download show my homework on your phone or tablet:

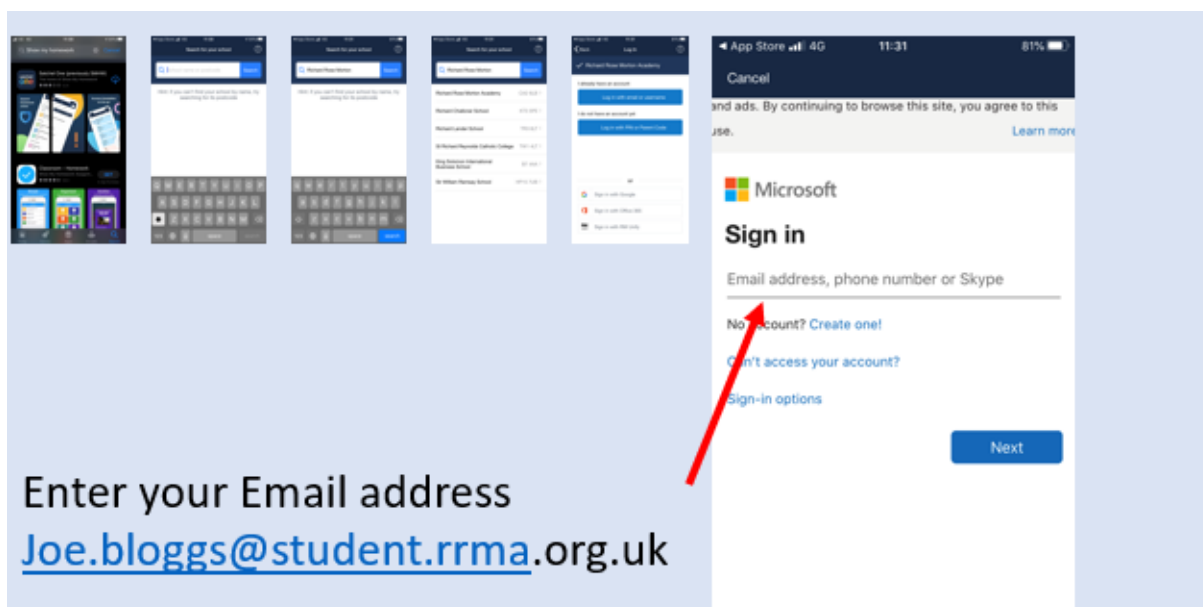
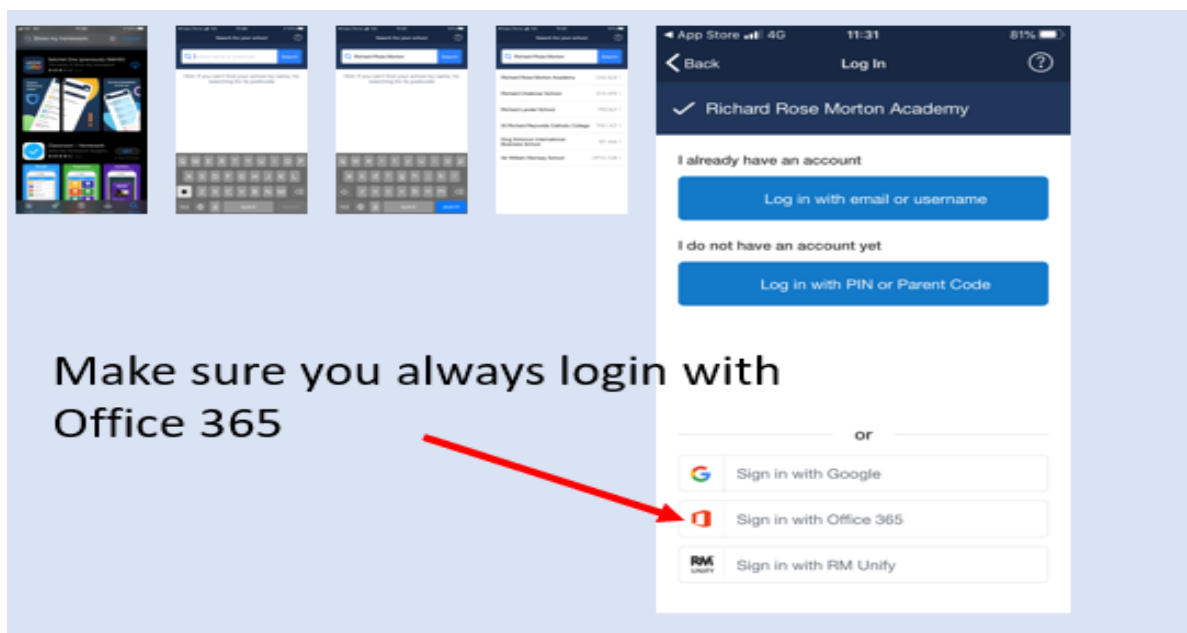


Search for Show My Homework or Satchel One on either Google play or the Apple App Store

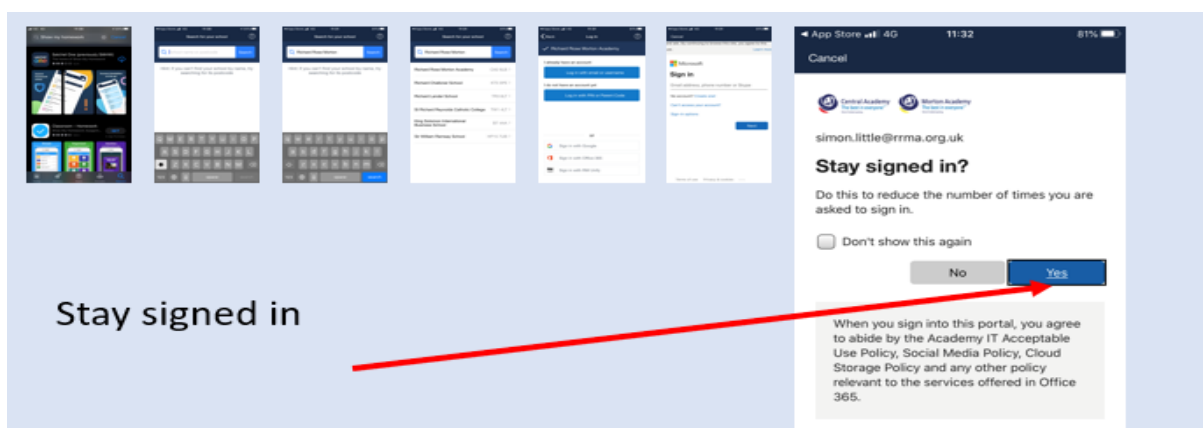


Once downloaded and open search for your school





If you are asked for your password. Then please use the same one you use in school.



By pressing stay signed will mean you will not have to go through this process again.



Other things to check and use

Accelerated Reader

You can read and take online quizzes on Accelerated Reader for each book you read. We encourage pupils to read at home as much as possible. We will be monitoring the uptake of the Accelerated Reader quiz completion and pupils will be rewarded for this on their return to school.

Website: <https://ukhosted70.renlearn.co.uk/2243830/>

Hegarty Maths

Website: www.hegartymaths.com

Login: Your name and date of birth

Sparx Maths Y7 Only

Website: www.sparx.co.uk/

Communication

You can download Apps for Office 365 and Teams on to your phone and Tablets.

Keep in touch, we are still a school community and we are here to support you.



TIER 4 TIMETABLE

In the event of a full lockdown students from each year group will follow the timetables below:

YEAR 7	P1	P2	P3	P4	P5	P6
DAY 1	ENG	DT	SCI	HIS	MATHS	MUSIC
DAY 2	ENG	HIS	SCI	GEOG	MATHS	GEOG
DAY 3	ENG	PE	SCI	SPANISH	MATHS	ART
DAY 4	HIS	GEOG	SPANISH	PE	RE	ENG
DAY 5	ART	PERFORMING ARTS	DT	ENG	MATHS	SCI
YEAR 8	P1	P2	P3	P4	P5	P6
DAY 1	ENG	MATHS	SCI	HIS	D&T	SPANISH
DAY 2	ENG	MATHS	SCI	GEOG	HIS	GEOG
DAY 3	ENG	MATHS	SCI	MUSIC	PE	ART
DAY 4	HIS	GEOG	SPANISH	PE	PERFORMING ARTS	ENG
DAY 5	ART	RE	D&T	ENG	MATHS	SCI

YEAR 9	P1	P2	P3	P4	P5	P6
DAY 1	SCI	PERFORMING ARTS	ENG	HIS	D&T	SPANISH
DAY 2	SCI	GEOG	ENG	ENG	HIS	IT
DAY 3	SCI	SCI	SCI	SPANISH	PE	PA
DAY 4	HIS	GEOG	MUSIC	ENG	MATHS	MATHS
DAY 5	ART	RE	D&T	ENG	MATHS	MATHS
YEAR 10	P1	P2	P3	P4	P5	P6
DAY 1	ENG	ENG	MATHS	MATHS	SCI	SCI
DAY 2	ENG	ENG	MATHS	MATHS	SCI	SCI
DAY 3	ENG	ENG	MATHS	MATHS	SCI	SCI
DAY 4&5	OP1	OP1	OP2	OP2	OP3	OP3
YEAR 11	P1	P2	P3	P4	P5	P6
DAY 1	MATHS	MATHS	SCI	SCI	ENG	ENG
DAY 2	MATHS	MATHS	SCI	SCI	ENG	ENG
DAY 3	MATHS	MATHS	SCI	SCI	ENG	ENG
DAY 4&5	OP2	OP2	OP3	OP3	OP1	OP1

Units of Study Half Term 2

For use with the Pupil Facing Curriculum

	YEAR 7	YEAR 8	YEAR 9
ENGLISH	A Christmas Carol	Macbeth	Othello
MATHS	7.05 Multiplication and division 7.06 Factors, multiples and primes 7.07 Areas of rectangles, triangles and parallelograms	8.06 Solving linear equations 8.07 Forming and solving linear equations 8.08 Co-ordinates and basic graphs	9.07 Fractions, decimals and Percentage 9.08 Fractions 9.09 Percentages 9.10 Proportion
SCIENCE	Cells 7CP Particles 7BC	Digestion and Nutrition Atoms and the periodic table	Forces in action Energetics
HISTORY	Medieval religion, life and society	Religious rollercoaster	WW1
GEOGRAPHY	Map Skills	Coasts	Climate Change
SPANISH	Classroom Language Phonics Personal Information Free-time Christmas in Spain	Holidays Staying in and going out	Relationships
RE	Christianity	Hinduism	Jesus and Forgiveness
ART	Portraiture in the style of Picasso	Collage and Americana in the style of Dolan Geiman	Steam Punk animals in the style of Vladimir Gvozdev
PE	Social Media Fitness challenges	Social Media Fitness challenges	Social Media Fitness challenges
D&T	Cooking and nutrition	Food commodities	International food, health and safety
Performing Arts	Mime acting and an anti-bullying devised performance	Musical theatre acting. Little shop of Horrors and Blood Brothers.	Realism acting studying scripted pieces
Music	Melody	Melody Topic 2	Film Music
Computing	Online Safety	Cyber Crime	Online threats and legislation

Units of Study Half Term 2

For use with the Pupil Facing Curriculum

	YEAR 10		YEAR 11	
ENGLISH	Romeo and Juliet Paper 2 Language		Mock preparation – Romeo and Juliet, An inspector Calls Never Let Me Go Paper 1 Language	
MATHS	Foundation 10.05 Quadratic graphs, turning points and roots 10.06 Linear simultaneous equations	10.05 Quadratic graphs, turning points and roots 10.06 Further expanding and factorising 10.07 Linear simultaneous equations	11.04 Number Review 11.05 Mock preparation	11.07 Bearings 11.08 Circle Theorems 11.09 Further Trigonometry
SCIENCE	Physics unit 1: Energy Chemistry unit 2: Bonding Biology unit 2: organisation		Physics unit 5: Forces Chemistry unit 5: Energy Changes Biology unit 5: Homeostasis and response	
HISTORY	Conflict and Tension		Health and the people	
GEOGRAPHY	Urban Issues and challenges		The challenge of Natural Hazards	
SPANSIH	Holidays		Where I live	
Music	Composition – Skills and technology		Composition – Skills and technology	
ART	Portraiture		Animals in Art, Portraiture, The Human Form.	
GCSE PE	Anaerobic and aerobic exercise Use of data Health, fitness and well-being The consequences of a sedentary lifestyle		NA	
CORE PE	Social Media fitness challenges		Social Media fitness challenges	
NCFE PE	Unit 1: Body systems and principles of training in health and fitness. Skeletal System. Muscular System. Respiratory System. Cardiovascular System. Energy		Unit 2: Preparing and planning for health and fitness. Lifestyle Factors. Fitness Testing. Training Methods. Optimising a Health and Fitness	

	Systems. Effects of Exercise. Health and Fitness. Principles of Training.	Programme. Health and Fitness Analysis and Goal Setting. The Structure of a Health and Fitness Programme. Health and Safety.
Engineering	Drawing board Parts drawn and assembled on Solid works	Exam Practise
Food	Describe food related causes of ill health	Operation of a kitchen
Animal Care	Animal Health	Animal Health
Child Care	Unit 1: An introduction to working with children aged 0-5	Unit 2: The development of children aged 0-5
Performing Arts	Component 1: Studying 3 live performances	Component 2 practical performance and also touching on the structure of component 3.

NOTES

